

Why Invest in Srbobran?





15,448

Number of Inhabitants
(June 2018)



284 km²

Area



10,390

Working Age Population
(June 2018)



119

Number of Business Enterprises (2019)



1,427

Registered Unemployed
(December 2019)



€ 382

Average Net Salary
(December 2019)



WELCOME TO SRBOBRAN!





Located in the north part of Serbia, Srbobran has an excellent strategic position





Srbobran accessibility:



Motorway A1-E75 (3 km away)



Motorway A3-E70 (70 km away)



Belgrade (114 km)



Osijek, Croatia (98 km)



Timisoara, Romania (150 km)



Railway Belgrade – Budapest
(10 km away)

Port in Novi Sad distance 30 km


Accessibility overview:



Border crossings overview

1


Batrovci
Serbia – Croatia (EU)

 125 km away



2

Horgoš – Rösztke
Serbia – Hungary (EU)


 83 km away



* Passenger border crossing

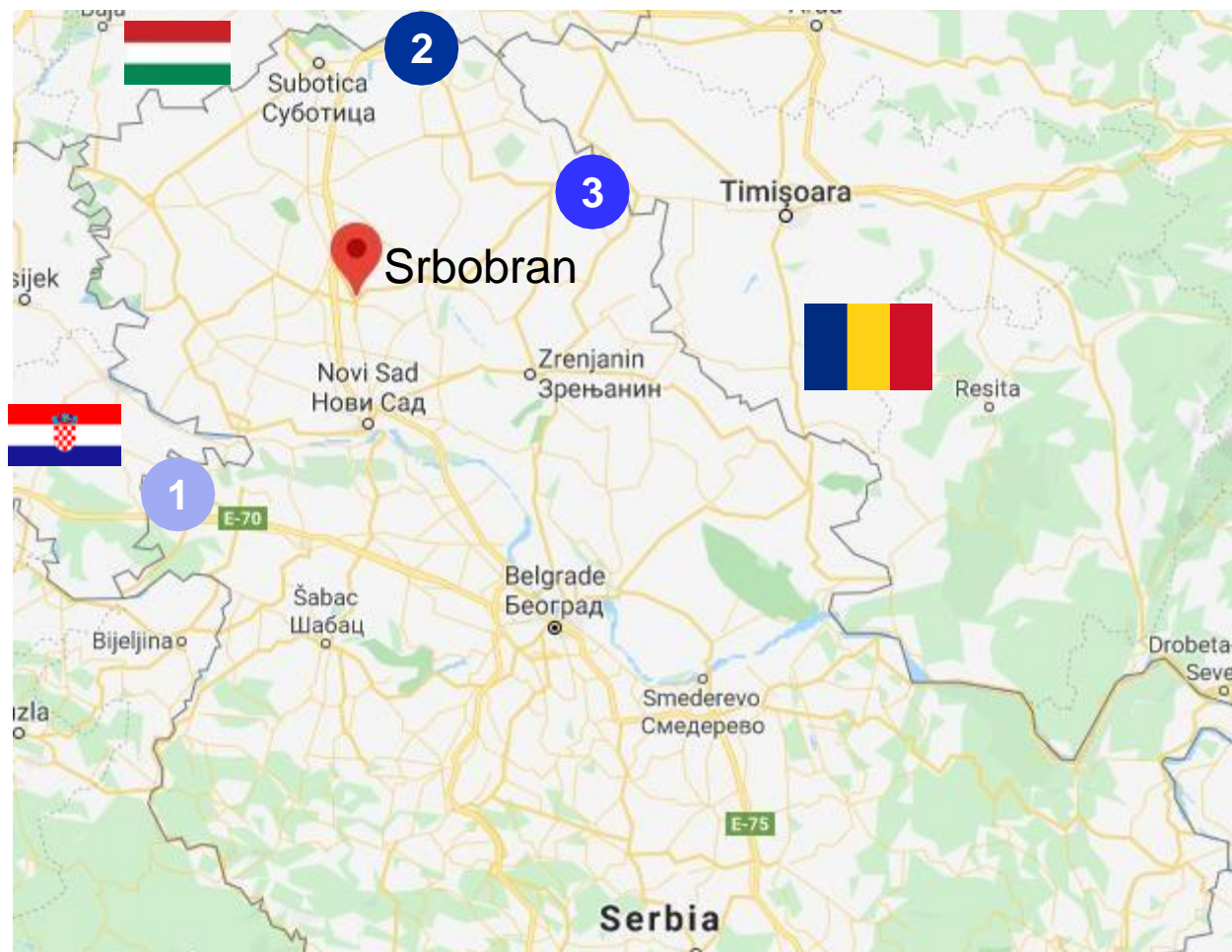
3

Nakovo
Serbia – Romania (EU)

 86 km away



Map overview





Destination	Distance from Srbobran (km)	Estimated Travel Time (h)
Novi Sad	43	33m
Osijek Airport, Croatia	98	1h 44m
Belgrade International Airport	114	1h 9m
Belgrade City Center	128	1h 19m
Budapest, Hungary	258	2h 39m
Port of Kopar Slovenia	620	6h 33m
Munich, Germany	902	9h 9m



Doing Business in Srbobran Area



1

Key Sectors



2

Available
Qualified
Labor Force



3

Competitive
Operating
Costs

4

“Ready to Go”
Locations

5

Tourism



Registered employed, Srbobran 2018





Best Seed Producer
Agribusiness

>100

TEHNIKA MB
Metal

60

DOO TURINKA
Agribusiness

>100

REAHEM DOO
Textile

34

OZZ Srbobran
Agribusiness

64

RUBBER CO.
Automotive

32

TRGO AUTO DOO
Vehicles service and trade

50

SD TEKSTIL
Conveyors

40

PIONIR AD
Chemicals

48

VULKAN Commerce
Automotive

19

Key sectors in Srbobran

Agribusiness

Quality raw material base

- Access to high-quality resources
- Prevailing rural areas providing favorable setting for agribusiness capacities development - processing sector
- Availability of qualified labor pool – 1,940 registered agricultural farms whereas 130 with faculty educated members, 800 with high school diploma members, and 250 with relevant vocational courses attended
- Great export potential due to high demand and FTAs
- 26,740 Agricultural land
- **Investment opportunities:** processing capacities development





Available
Qualified
Workforce



Secondary School	Study Programs	Students per Year
Gymnasium	General	84
School of Economics	Business Administrator, Financial Administrator, Economics technician etc.	79
Total		163

Education

Informal education programs available for:

- Welders
- Tailors
- Electricians

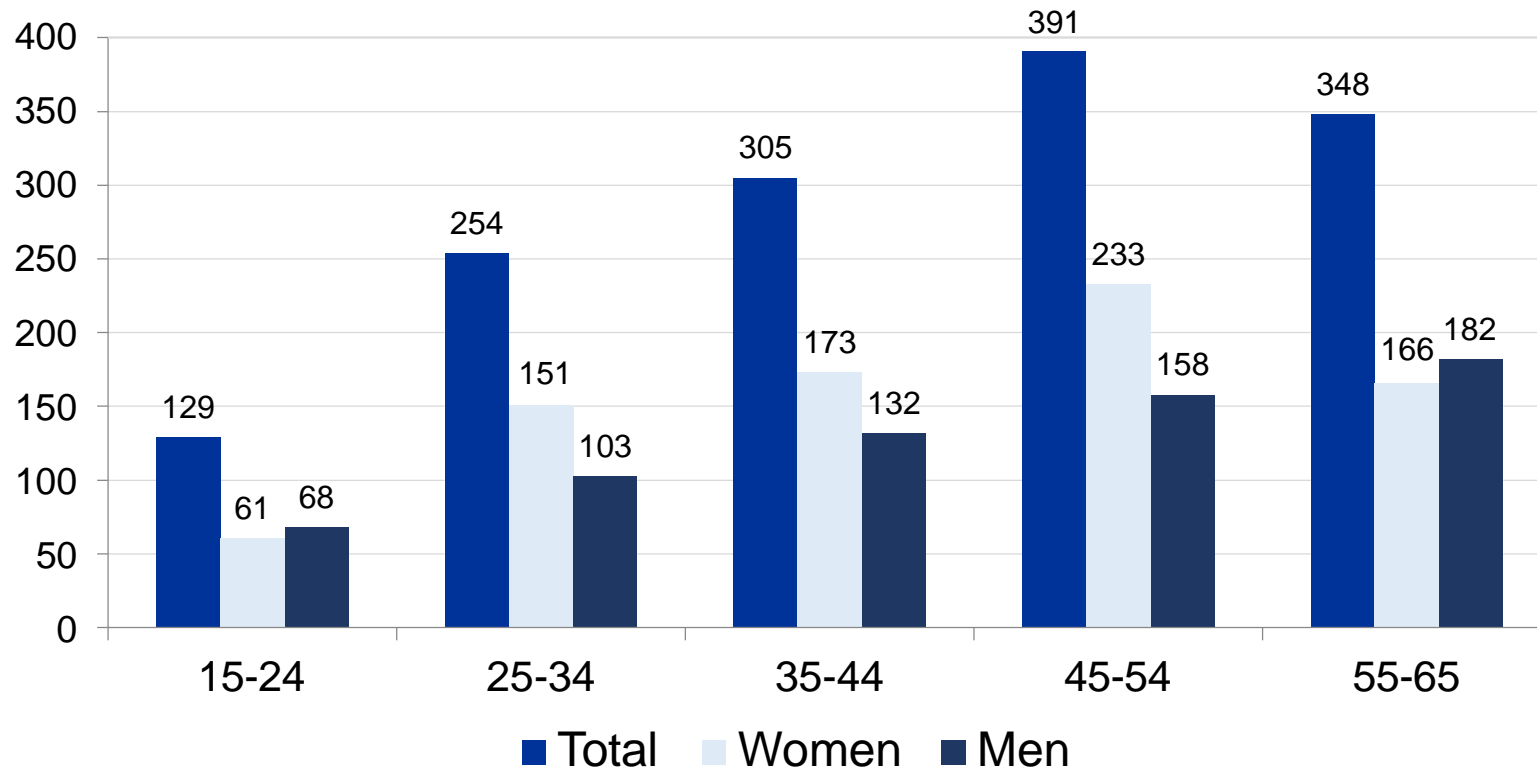
Only 40 km to Novi Sad where all high school profiles and university programs are available

High school profiles mostly attended: **Technical, Economics, Medical**

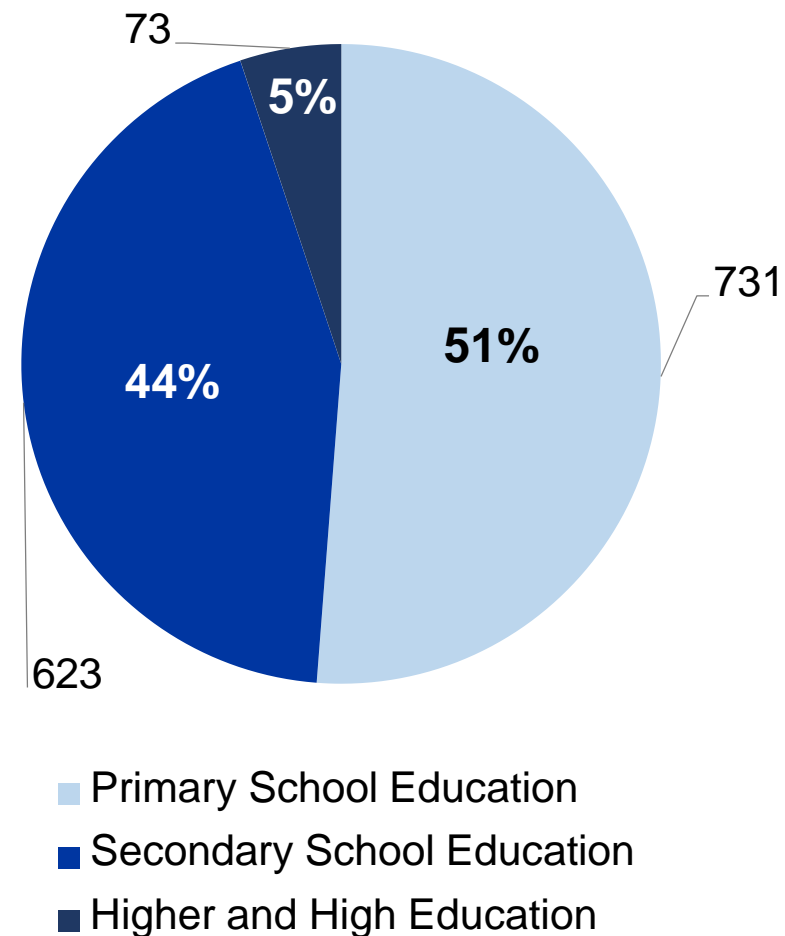
The standard commuting area of 30 minutes or 30 kilometers creates potential labor pool of more than 48.000 people, including City of Novi Sad as second largest university center in Serbia with more than 50.000 students, one third of which enrolled at technical studies



Unemployed by age group and gender – October 2019



Unemployed – Educational Level



Source: National Employment Agency

costs



Competitive
Operating
Costs



COMPETITIVE OPERATING COSTS – LABOR COST



Srbobran

382 €

Serbia

506 €

Average Net Salaries December 2019

Labor Cost, Srbobran	Amount
Average Net Salary	382 €
Contributions and Taxes (Employee)	145 €
Contributions and Taxes (Employer)	90 €
Total Contributions	235 €
Average Gross Salary (Total Cost)	617 €

WATER



0,38-0,95 € /m3

SEWAGE



0,95 EUR/m3

ELECTRICITY



0,065-0,069 € / kWh

GAS



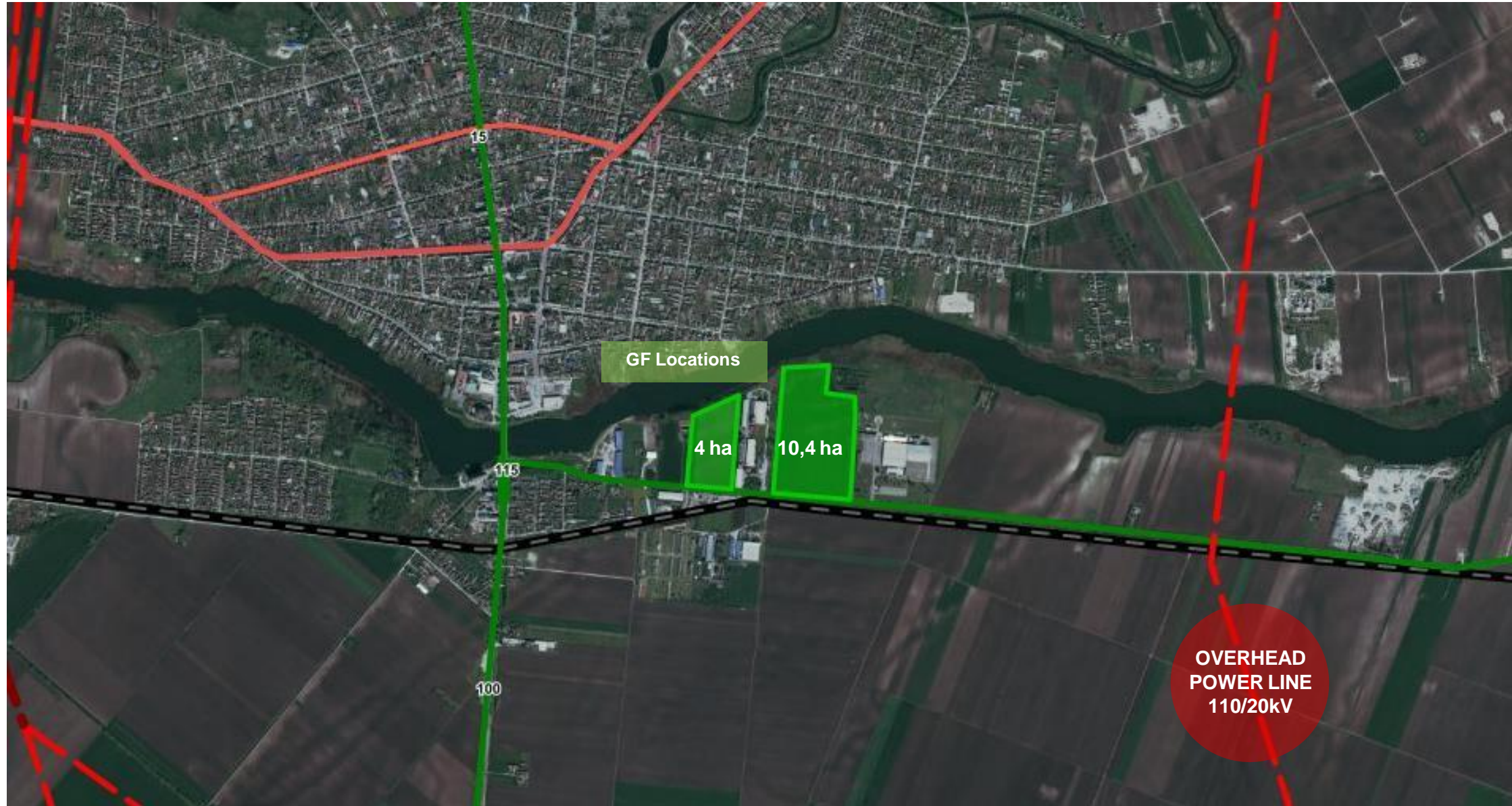
0,4 € /m3



“Ready to Go”
Proposed
Locations

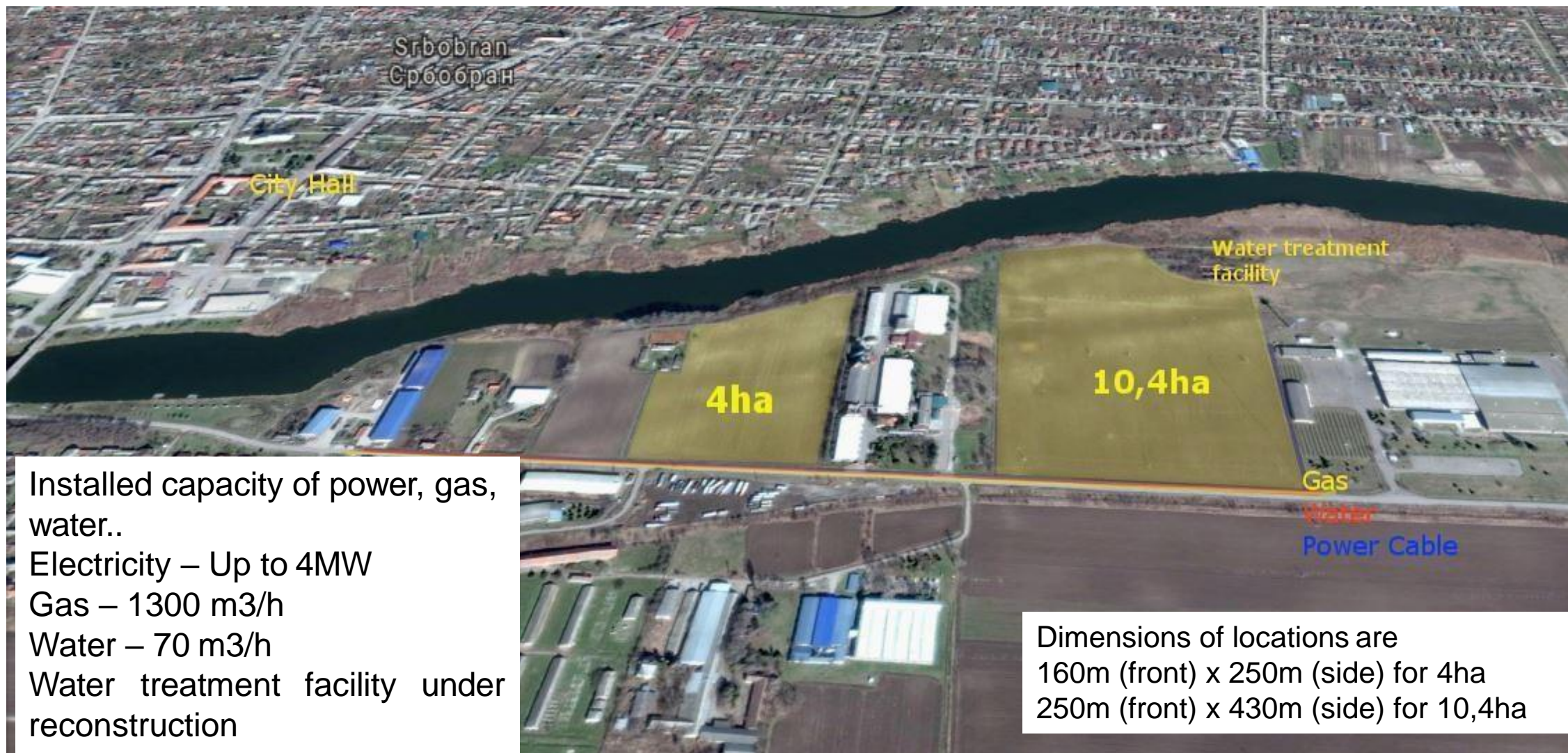


SATELLITE IMAGE OF THE LOCATION





Proposed industrial Zone



Installed capacity of power, gas, water..

Electricity – Up to 4MW

Gas – 1300 m³/h

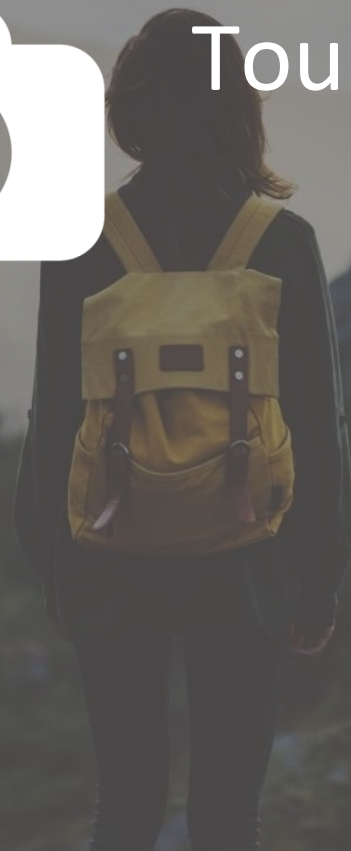
Water – 70 m³/h

Water treatment facility under reconstruction

Dimensions of locations are
160m (front) x 250m (side) for 4ha
250m (front) x 430m (side) for 10,4ha



Tourism



Abundant natural potentials

- **Canal DTD** – great tourism potential
- **Sporting-recreational** tourism potential
- **Hunting tourism** – over 28,000 ha of hunting grounds - pheasant, partridge, rabbit, deer, and other small game
Hunting association " Fazan" in Srbobran location - 18,400 ha
Location Turija - 5,500 ha
Location Nadalj - 4,000 ha
Fishing areas - river Krivaja , Beljanska pond, Great Backa canal
- **Ethno tourism** – great number of old authentic ranches that could be adapted for various touristic purposes – at small price
Predetermined plot intended for the construction of ethno-village in Turija – potential for municipality-investors partnership
- **Nature Park** Beljanska bara



Biomass

Access to ample crop residues

- Significant crop residues – available for biomass cogeneration
- Expertise and longstanding experience in utilization of significant biomass - crop residues for heating energy production mainly in local households
- Crop residues available for biomass resources:
 - Maize - 1,225,000 t
 - Sunflower - 275,000 t
 - Soy - 785,000 t
 - Wheat - 720,000 t
 - Barley - 120,000 t





Conclusion



- Ideal geostrategic position - located in the central part of Backa 75 km distance to borders
- The composition and quantity of agricultural land excellent for organic production development
- Municipality development level allows investors access to a large number of local, provincial and national incentives
- Protected Nature Park of the third category allows sustainable development of river tourism
- Abundant geothermal resources for spa center development projects



Radivoj Debeljacki – President of the Municipality of Srbobran

Phone: +381 21 730 020

+381 64 8894446

Email: rale.debeljacki@gmail.com



RAS

Development Agency of Serbia

Development Agency of Serbia

Kneza Milosa 12, 11 000 Belgrade

P: +381 11 3398 900

office@ras.gov.rs

www.ras.gov.rs/en